

# Booth Sweeper

Manual P/N 768655 A  
– English –

**Keep for Future Reference**



NORDSON (UK) LTD. • STOCKPORT



#### **Order number**

P/N = Order number for Nordson products

#### **Notice**

This is a Nordson Corporation publication which is protected by copyright. Original copyright date 2001.  
No part of this document may be photocopied, reproduced, or translated to another language without the prior written consent of Nordson Corporation. The information contained in this publication is subject to change without notice.

#### **Trademarks**

AccuJet, AquaGuard, Asymtek, Automove, Autotech, Blue Box, CF, Can Works, Century, Clean Coat, CleanSleeve, CleanSpray, COLORMAX, Compumelt, Control Coat, Cross-Cut, Cyclo-Kinetic, Dispensejet, DispenseMate, Durafiber, Durasystem, Easy Coat, Easymove Plus, Econo-Coat, EPREG, ETI, Excel 2000, Flex-O-Coat, Flexi-Spray, Flow Sentry, Fluidmove, Fluidshooter, FoamMelt, FoamMix, Helix, Horizon, Hose Mole, Hot Shot, Hot Stitch, Isocoil, Isocore, Iso-Flo, KB30, Little Squirt, Magnastatic, MEG, Meltex, MicroSet, Millenium, Mini Squirt, Moist-Cure, MultiScan, Nordson, OmniScan, Opticoat, Package of Values, PluraFoam, Porous Coat, PowderGrid, Powderware, Pro-Flo, ProLink, PRX, RBX, Rhino, S. design stylized, SC5, SCF, Select Coat, Select Cure, Slaughterback, Smart-Coat, Spray Squirt, Spraymelt, Super Squirt, Sure-Bond, Sure Coat, System Sentry, Tela-Therm, Trends, Tribomatic, UniScan, UpTime, Versa-Coat, Versa-Screen, Versa-Spray, Watermark, When you expect more are registered trademarks – ® – of Nordson Corporation.

ATS, Auto-Flo, AutoScan, BetterBook, Chameleon, CanNeck, Check Mate, CPX, Control Weave, Controlled Fiberization, EasyClean, Ebraid, Eclipse, Equi=Bead, Fillmaster, FlexiCoat, Gluie, Ink-Dot, JR, Maxima, MicroFin, Minimeter, Mountaingate, Multifil, OptiMix, Pattern View, PluraMix, Primarc, Prism, Pro-Meter, Pro-Stream, Process Sentry, PurTech, Pulse Spray, Saturn, Seal Sentry, Select Charge, Select Series, Sensomatic, Shaftshield, Spectral, Spectrum, Sure Brand, Sure Coat, Swirl Coat, Vista, Walcom, 2 Rings (Design) are trademarks – ® – of Nordson Corporation.

Designations and trademarks stated in this document may be brands that, when used by third parties for their own purposes, could lead to violation of the owners' rights.

# Declaration of Conformity

## 98/37/EC

## 73/23/EEC

We,

**Nordson (U.K.) Limited**

of

**Ashurst Drive, Cheadle Heath, Stockport, Cheshire, SK3 0RY,  
United Kingdom**

declare that under our sole responsibility for supply/manufacture of the product(s)

**Product Name** Booth Sweeper Assembly

**Model Number(s)**

**Product Options** All

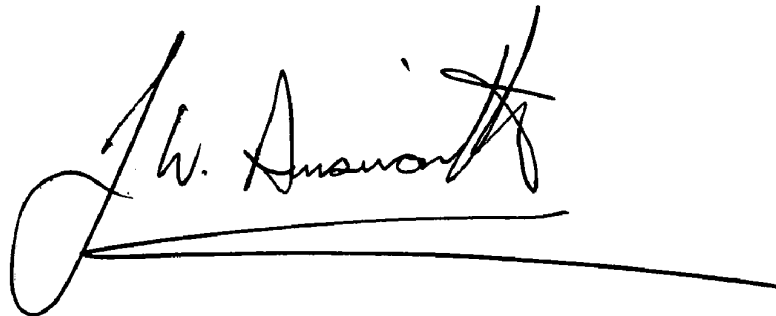
to which this declaration relates, is in conformity with the following standards and other normative documents

**Safety** BS EN 60204-1:1993  
"Safety of Machinery – Electrical equipment of machines"

EN 60335:Part 1:1988  
"Safety of household and similar electrical appliances"

BS EN 292:1991  
"Safety of machinery – Basic concepts, general principles for design"

following the provisions of 98/37/EC and 73/23/EEC Directives

A handwritten signature in black ink, appearing to read 'J. Ainsworth', with a long horizontal line extending from the end of the signature.

Jim Ainsworth  
General Manager

Nordson (U.K.) Ltd., 5th January 2001

NB ref EN45014 (BS7514)



# Table of Contents

---

## ***Congratulations on the Purchase of Your Nordson Product***

---

Your Safety is Important to Nordson .....	O-1
Manufacturer of Equipment .....	O-1

---

## ***Nordson International***

---

Europe .....	O-3
Distributors in Eastern & Southern Europe .....	O-3
Outside Europe / Hors d'Europe / Fuera de Europa .....	O-4
Africa / Middle East .....	O-4
Asia / Australia / Latin America .....	O-4
Japan .....	O-4
North America .....	O-4

---

## ***Section 1 Safety***

---

1. Introduction .....	1-1
2. Qualified Personnel .....	1-1
3. Intended Use .....	1-1
4. Regulations and Approvals .....	1-1
5. Personal Safety .....	1-2
6. Fire Safety .....	1-3
7. Action in the Event of a Malfunction .....	1-4
8. Disposal .....	1-4

---

## ***Section 2 Description***

---

1. Intended Use .....	2-1
2. Features .....	2-2

---

**Section 3**  
**Installation**

---

- 1. Transport ..... 3-1
- 2. Unpacking ..... 3-1
- 3. Removing ..... 3-1
- 4. Storage ..... 3-1
- 5. Disposal ..... 3-1
- 6. Setting Up the Unit ..... 3-2
  - Wire Sweeper Set Up ..... 3-2
  - Magnetic Sweeper Set Up ..... 3-3
  - Fluid Bed and Transfer Pump ..... 3-3
- 7. Electrical ..... 3-3

---

**Section 4**  
**Operation**

---

- 1. Daily Operation ..... 4-1

---

**Section 5**  
**Maintenance**

---

- 1. Daily Maintenance ..... 5-1
- 2. Every Six Months or 3000 Hours ..... 5-1

---

**Section 6**  
**Troubleshooting**

---

- 1. Important Hints for Troubleshooting ..... 6-1
- 2. Fault Finding ..... 6-1

---

**Section 7**  
**Parts**

---

- 1. Parts ..... 7-1
  - Using the Illustrated Parts List ..... 7-1
- 2. Wire Sweeper Assembly ..... 7-2
- 3. Magnetic Sweeper Assembly ..... 7-4

---

**Section 8**  
**Specifications**

---

- 1. Sweeper Base Size ..... 8-1

# Congratulations on the Purchase of Your Nordson Product

Nordson equipment is engineered and manufactured in accordance with strict specifications, using high quality components and state-of-the-art technologies that assure reliable, long-term performance. Your product was thoroughly tested for proper operation prior to shipment.

Before unpacking and installing your new equipment, please read this manual. It is your guide to safe installation, productive operation and effective maintenance. We recommend that you keep the manual available for future reference.

---

## ***Your Safety is Important to Nordson***

---

Carefully read the *Safety* section. Your product is designed for safe operation when used according to the published instructions. Potential hazards exist when operating instructions are not followed.

---

## ***Manufacturer of Equipment***

---

Nordson (U.K.) Ltd.  
Ashurst Drive  
Cheadle Heath  
Stockport  
England  
SK3 0RY

Telephone: 0044 (0) 161-495-4200  
Fax: 0044 (0) 161-428-6716

For a list of local Nordson organisations, see *Nordson International*.





# Nordson International

## Europe

Country		Phone	Fax
<b>Austria</b>		43-1-707 5521	43-1-707 5517
<b>Belgium</b>		31-13-511 8700	31-13-511 3995
<b>Czech Republic</b>		4205-4159 2411	4205-4124 4971
<b>Denmark</b>	<i>Hot Melt</i>	45-43-66 0123	45-43-64 1101
	<i>Finishing</i>	45-43-66 1133	45-43-66 1123
<b>Finland</b>		358-9-530 8080	358-9-530 80850
<b>France</b>		33-1-6412 1400	33-1-6412 1401
<b>Germany</b>	<i>Erkrath</i>	49-211-92050	49-211-254 658
	<i>Lüneburg</i>	49-4131-8940	49-4131-894 149
	<i>Düsseldorf - Nordson UV</i>	49-211-3613 169	49-211-3613 527
<b>Italy</b>		39-02-904 691	39-02-9078 2485
<b>Netherlands</b>		31-13-511 8700	31-13-511 3995
<b>Norway</b>	<i>Hot Melt</i>	47-23 03 6160	47-22 68 3636
	<i>Finishing</i>	47-22-65 6100	47-22-65 8858
<b>Poland</b>		48-22-836 4495	48-22-836 7042
<b>Portugal</b>		351-22-961 9400	351-22-961 9409
<b>Russia</b>		7-812-11 86 263	7-812-11 86 263
<b>Slovak Republic</b>		4205-4159 2411	4205-4124 4971
<b>Spain</b>		34-96-313 2090	34-96-313 2244
<b>Sweden</b>	<i>Hot Melt</i>	46-40-680 1700	46-40-932 882
	<i>Finishing</i>	46 (0) 303 66950	46 (0) 303 66959
<b>Switzerland</b>		41-61-411 3838	41-61-411 3818
<b>United Kingdom</b>	<i>Hot Melt</i>	44-1844-26 4500	44-1844-21 5358
	<i>Finishing</i>	44-161-495 4200	44-161-428 6716
	<i>Nordson UV</i>	44-1753-558 000	44-1753-558 100

## Distributors in Eastern & Southern Europe

<b>DED, Germany</b>	49-211-92050	49-211-254 658
---------------------	--------------	----------------

**Outside Europe /  
Hors d'Europe /  
Fuera de Europa**

- For your nearest Nordson office outside Europe, contact the Nordson offices below for detailed information.
- Pour toutes informations sur représentations de Nordson dans votre pays, veuillez contacter l'un de bureaux ci-dessous.
- Para obtener la dirección de la oficina correspondiente, por favor diríjase a unas de las oficinas principales que siguen abajo.

Contact Nordson	Phone	Fax
-----------------	-------	-----

**Africa / Middle East**

DED, Germany	49-211-92050	49-211-254 658
--------------	--------------	----------------

**Asia / Australia / Latin America**

Pacific South Division, USA	1-440-988-9411	1-440-985-3710
--------------------------------	----------------	----------------

**Japan**

Japan	81-3-5762 2700	81-3-5762 2701
-------	----------------	----------------

**North America**

Canada		1-905-475 6730	1-905-475 8821
USA	Hot Melt	1-770-497 3400	1-770-497 3500
	Finishing	1-440-988 9411	1-440-985 1417
	Nordson UV	1-440-985 4592	1-440-985 4593

## *Section 1*

---

# ***Safety***

---



# Section 1

## Safety

---

### **1. Introduction**

---

Read and follow these safety instructions. Task and equipment specific warnings, cautions, and instructions are included in equipment documentation where appropriate.

Make sure all equipment documentation, including these instructions, is accessible to all persons operating or servicing equipment.

---

### **2. Qualified Personnel**

---

Equipment owners are responsible for making sure that Nordson equipment is installed, operated, and serviced by qualified personnel. Qualified personnel are those employees or contractors who are trained to safely perform their assigned tasks. They are familiar with all relevant safety rules and regulations and are physically capable of performing their assigned tasks.

---

### **3. Intended Use**

---

Use of Nordson equipment in ways other than those described in the documentation supplied with the equipment may result in injury to persons or damage to property.

Some examples of unintended use of equipment include

- using incompatible materials
- making unauthorized modifications
- removing or bypassing safety guards or interlocks
- using incompatible or damaged parts
- using unapproved auxiliary equipment
- operating equipment in excess of maximum ratings

---

### **4. Regulations and Approvals**

---

Make sure all equipment is rated and approved for the environment in which it is used. Any approvals obtained for Nordson equipment will be voided if instructions for installation, operation, and service are not followed.

---

## **5. Personal Safety**

---

To prevent injury follow these instructions.

- Do not operate or service equipment unless you are qualified.
- Do not operate equipment unless safety guards, doors, or covers are intact and automatic interlocks are operating properly. Do not bypass or disarm any safety devices.
- Keep clear of moving equipment. Before adjusting or servicing any moving equipment, shut off the power supply and wait until the equipment comes to a complete stop. Lock out power and secure the equipment to prevent unexpected movement.
- Relieve (bleed off) hydraulic and pneumatic pressure before adjusting or servicing pressurized systems or components. Disconnect, lock out, and tag switches before servicing electrical equipment.
- While operating manual electrostatic spray guns, make sure you are grounded. Wear electrically conductive gloves or a grounding strap connected to the gun handle or other true earth ground. Do not wear or carry metallic objects such as jewelry or tools.
- If you receive even a slight electrical shock, shut down all electrical or electrostatic equipment immediately. Do not restart the equipment until the problem has been identified and corrected.
- Obtain and read Material Safety Data Sheets (MSDS) for all materials used. Follow the manufacturer's instructions for safe handling and use of materials, and use recommended personal protection devices.
- To prevent injury, be aware of less-obvious dangers in the workplace that often cannot be completely eliminated, such as hot surfaces, sharp edges, energized electrical circuits, and moving parts that cannot be enclosed or otherwise guarded for practical reasons.

---

## 6. Fire Safety

---

To avoid a fire or explosion, follow these instructions.

- Ground all conductive equipment in the spray area. Check equipment and workpiece grounding devices regularly. Resistance to ground must not exceed one mega-ohm.
- Shut down all equipment immediately if you notice static sparking or arcing. Do not restart the equipment until the cause has been identified and corrected.
- Do not smoke, weld, grind, or use open flames where flammable materials are being used or stored.
- Provide adequate ventilation to prevent dangerous concentrations of volatile materials or vapors. Refer to local codes or your material MSDS for guidance.
- Do not disconnect live electrical circuits while working with flammable materials. Shut off power at a disconnect switch first to prevent sparking.
- Know where emergency stop buttons, shutoff valves, and fire extinguishers are located. If a fire starts in a spray booth, immediately shut off the spray system and exhaust fans.
- Shut off electrostatic power and ground the charging system before adjusting, cleaning, or repairing electrostatic equipment.
- Clean, maintain, test, and repair equipment according to the instructions in your equipment documentation.
- Use only replacement parts that are designed for use with original equipment. Contact your Nordson representative for parts information and advice.

---

**7.    *Action in the Event of a  
Malfunction***

---

If a system or any equipment in a system malfunctions, shut off the system immediately and perform the following steps:

- Disconnect and lock out electrical power. Close pneumatic shutoff valves and relieve pressures.
- Identify the reason for the malfunction and correct it before restarting the equipment.

---

**8.    *Disposal***

---

Dispose of equipment and materials used in operation and servicing according to local codes.



## Section 2

---

# ***Description***

---



## Section 2

### Description

#### 1. *Intended Use*

The Nordson Booth Sweeper is generally used in conjunction with any booths which have a flat stainless steel floor. By the use of a simple wire driven brush, or a specialised magnet-driven aluminium blade, it reduces the build up of oversprayed powder on the booth base, recycling it back via a hopper at each end of the booth base.

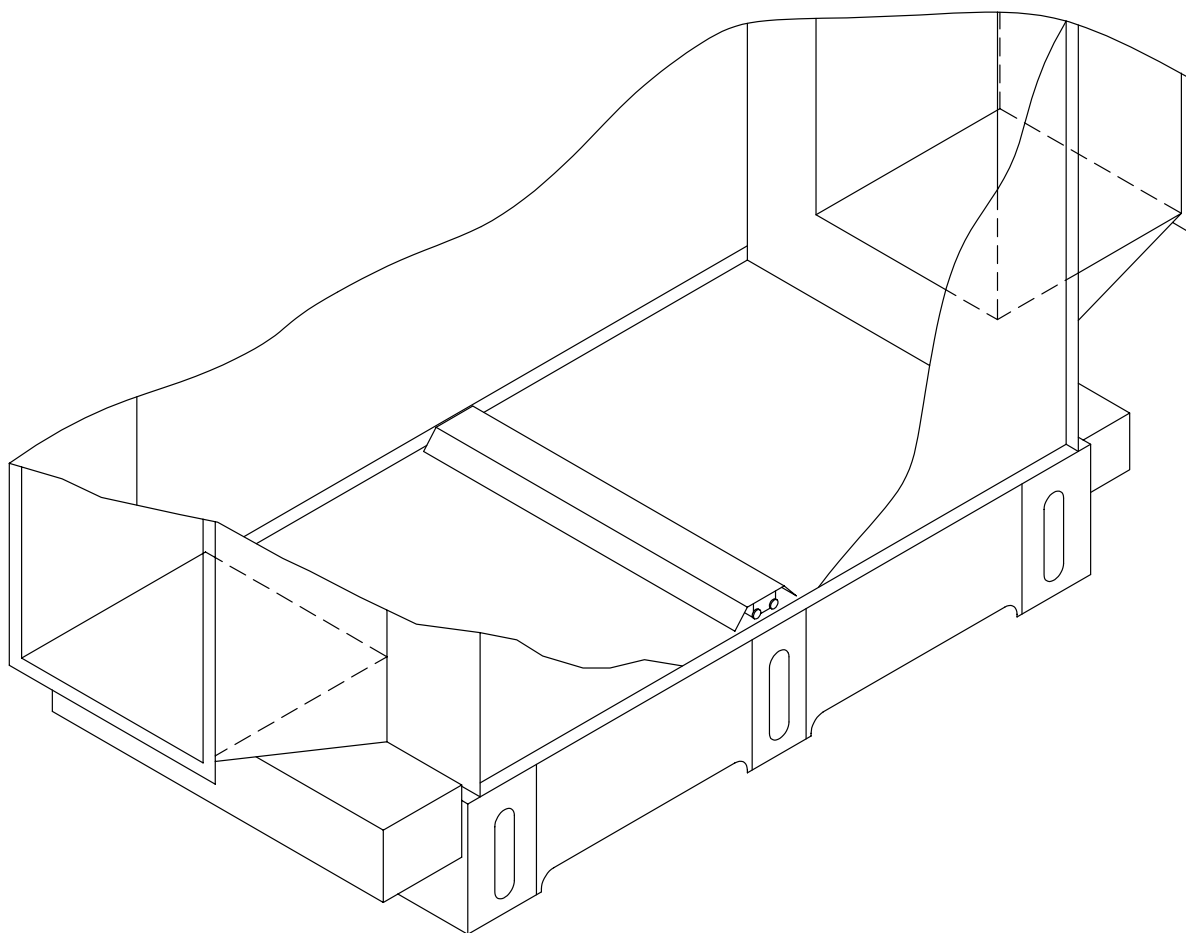


Fig. 2-1 Typical Isometric View of a Booth Sweeper

---

## **2. Features**

---

There are two main types of booth sweeper:

- A wire driven brush, which features two stainless steel wires running each side of the booth base, with a simple brush attached between them. It is driven via a motor and gearbox situated at the end one end of the booth. On the other end of the booth are two wire tensioning mechanisms. The movement is controlled via two or four limit switches situated under the booth base. This type of sweeper is general used on one colour applications.
- A magnetic driven blade, which features an easy to remove and clean aluminium blade with rubber wiper. This is driven via four magnets, two situated on the blade and the other two under the booth base. These are driven via a chain drive, which is connected to a motor and gearbox situated at the end one end of the booth. On the other end of the booth are two tensioning mechanisms. The movement is again controlled via two or four limit switches situated under the booth base. This type of sweeper is generally used on multi coloured applications.

## *Section 3*

---

# ***Installation***

---



## Section 3

# Installation



**WARNING:** Allow only qualified personnel to perform the following tasks. Observe and follow the safety instructions in this document and all other related documentation.

---

### 1. Transport

---

Transport the unit so as to avoid damage. Do not throw the unit. Use suitable packaging materials and sturdy cartons. All systems are designed to be customer specific, therefore, dimensions and weights vary.



**WARNING:** Fragile assemblies and components are located under the booth floor. Be aware when unloading or transporting the booth sweeper base.

---

### 2. Unpacking

---

Carefully unpack the unit to avoid damaging it. Check for damage caused during transport.

Save packing materials for possible later use. Otherwise recycle or dispose of properly according to local regulations.

---

### 3. Removing

---

Switch off the mains supply, then disconnect all electrical connections from the unit.

---

### 4. Storage

---

Pack the unit in suitable packing materials and sturdy cartons. Protect from humidity, dust and large temperature fluctuations (condensation).

---

### 5. Disposal

---

Dispose of properly according to local regulations.

---

## **6. Setting Up the Unit**

---



**WARNING:** Allow only qualified personnel to perform the installation. Observe safety instructions.

1. All sweeper booth bases are delivered pre assembled and tested up to where is practicable for shipping. The installation instructions below, refer to a booth delivered in its flat packed state.
2. Place the booth base in the required location on a leveled floor. On each corner of the booth are located jacking bolts. These should be used to ensure the base is level in both plains.
3. Build up the booth canopy, as explained in your booth manual.

### ***Wire Sweeper Set Up***

1. Fit the four air blowers at each end of the booth into the holes provided, and ensure regulated air feeds (approx. 2–3Bar) are installed.
2. Cut the two stainless steel wires provided to the required length. Thread the two limit switch actuators over the cable (see parts list for details).
3. Run both wires under the booth, around each pulley and through the centre of the air blower. Ensure that the two limit switch actuators are installed under the booth base.
4. Attach the four ends of the wires to the sweeper brush, via the two brackets and the wire connection clips provided.
5. Ensure that each wire is located over the four pulleys, and through the limit switch mechanism located at the two or four corners under the booth base. Pre-Tension the wires, using the tensioning mechanisms located at one end of the booth. During the tensioning, ensure the brush remains parallel with the booth ends. This is not the final tensioning. Ensure that the wires can easily slip over the pulleys.
6. Manually position the brush 30mm from one of the fluidised hoppers at the end of the booth.
7. Under the opposite corner of the booth base, set the limit switches, so the that they are actuate. Using the grub screw, tighten the actuators on to the wire.
8. Manually position the brush 30mm from the opposite fluidised hoppers, and set the other two limit switch actuators in the same way.
9. Tension the wire. Do not over tension, the wire should be tightened so there is no sagging under or over the booth length.
10. The sweeper is now ready for operation.



---

## 6. Setting Up the Unit

(contd.)

---

### **Magnetic Sweeper Set Up**

1. On all magnetic sweeper assemblies, the base is delivered pre assembled and tested, therefore, the drive mechanism and limit switches are pre set.
2. Place the Aluminium sweeper blade onto of the booth base.
3. Starting from one end, slowly push the blade up the length of the booth until it locates on the magnets located under the floor. You should experience a slight repulse at first, but then a definite location.
4. The sweeper is now ready for operation.

### **Fluid Bed and Transfer Pump**

The fluid beds are generally pre installed before deliver. If not they should be installed with the SMOOTH SIDE UP, and the use of an acrylic sealant is required. DO NOT USE SILICON BASED SEALANTS.

The transfer pumps require fitting on the spigot provided on each end of the booth. They are held in position via O-rings.

Both the fluid bed and the transfer pump require pneumatic feeds. These are regulated supplies, which are fed from the Nordson control panel. (consult your control panel drawing for details).

---

## 7. Electrical

---



**WARNING:** Allow only qualified personnel to perform electrical connections. Observe the safety instructions.

There are two main connections on both sweeper designs:

1. The drive motor requires a 380/415v three phase supply from the Nordson control panel to IP6X regulations. (consult your control panel drawing for details).
2. The limit switches are connected via a junction box located under the booth base and are fed to the Nordson control panel to IP6X regulations. (consult your control panel drawing for details).



## *Section 4*

---

# ***Operation***

---



## Section 4 Operation



**WARNING:** Allow only qualified personnel to perform the following tasks. Observe and follow the safety instructions in this document and all other related documentation.

---

### 1. *Daily Operation*

---

Both the magnetic and wire scraper assemblies automatically operate through timer controls. It is not necessary for the sweeper to be permanently in operation. The use of timers ensures the booth base is kept clean, but the mechanism is not over worked.

The sweeper should only be switched off during a clean down or colour change, or when any personnel need to enter the booth enclosure



**WARNING:** The booth sweeper assembly must be switched off before entering the booth canopy, as permanent damage to the sweeper could occur.



## *Section 5*

---

# ***Maintenance***

---





## Section 5 Maintenance



**WARNING:** Allow only qualified personnel to perform the following tasks. Observe and follow the safety instructions in this document and all other related documentation.



**WARNING:** Breathing in certain airborne dusts (including finishing powders) may be hazardous to health. Ask the powder manufacturer for a Material Safety Data Sheet (MSDS) for information. Use appropriate respiratory protection.

---

### 1. Daily Maintenance

---

- Check operation of sweeper assembly.
- Check blade/brush alignment. Adjust if required.
- Remove any foreign bodies from the booth hoppers.



**WARNING:** The booth sweeper assembly must be switched off before entering the booth canopy, as permanent damage could occur.

- Check operation of transfer pump and fluidising bed. Repair or replace if necessary.

---

### 2. Every Six Months or 3000 Hours

---

- Check tension of chain/wire and adjust if necessary.
- Inspect all parts for wear and replace as necessary.
- Grease/oil all bearings.
- Inspect and test motor and gearbox.
- Check limit switch operation. Repair or replace where necessary.
- Check Fluid bed and transfer pump operation. Replace or repair if necessary.



# ***Troubleshooting***

---



# Section 6

## Troubleshooting



**WARNING:** Allow only qualified personnel to perform the following tasks. Observe and follow the safety instructions in this document and all other related documentation.

### 1. Important Hints for Troubleshooting

The following tables provide general information for the troubleshooting of basic problems. Sometimes more detailed information, circuit diagrams or measuring devices are also needed for troubleshooting.

It must be noted that a fault can occur for several reasons. It is advisable to check all possible causes for a given fault. Obvious causes of malfunction such as broken wires, missing fasteners etc., should be noted during visual inspections and corrected immediately

The Unit does not contain any user serviceable parts; approved parts available from Nordson must replace any parts that fail.

### 2. Fault Finding

Table 6a

Problem	Possible Cause	Corrective Action	Refer to
<b>Sweeper Blade/Brush will not operate</b>	Power off.	Switch on power.	
	Overload operated.	Re-set overload.	
	Breaker tripped.	Investigate cause.	
	Wiring fault.	Repair or replace.	
	Motor failure.	Investigate cause. Replace.	
	Contactors fault.	Replace.	
	Limit Switch(es)	Repair or replace	
	Drive pulleys/sprockets have become loose.	Repair or replace	

## 2. Fault Finding (contd.)

Table 6a

Problem	Possible Cause	Corrective Action	Refer to
<b>Sweeper Blade/Brush is hitting the end of the booth</b>	Limit switch overrun.	Reset blade or brush to the centre of the booth. Check limit switch operation and limit switch striker. Repair or replace.	
	Contactor fault.	Replace.	
	Motor/Gearbox faulty.	Repair or replace.	
<b>Sweeper Blade/Brush is misaligned</b>	Chain/Wire has become slack.	Slacken the drive chain/wire, and reset.	
<b>Fluidising hopper are not emptying</b>	Pneumatic air supply is off.	Turn on air supply, and check air supply to the fluid bed.	
	Fluidising bed is inoperative or ineffective.	Replace Fluidising plate.	
	Transfer pump is inoperative or ineffective.	Check for blockages. Replace venturi if necessary.	
<b>Excessive powder is leaking from the ends of the booth (Wire sweeper only)</b>	Pneumatic air supply is off.	Turn on air supply.	
	Air blowers inoperative.	Replace.	

## *Section 7*

---

# ***Parts***

---





## Section 7

### Parts

#### 1. Parts

To order parts, call the Nordson Customer Service Center or your local Nordson representative. Use the parts list, and the accompanying illustration, to describe and locate parts correctly.

#### **Using the Illustrated Parts List**

Numbers in the Item column correspond to numbers that identify parts in illustrations following each parts list. The code NS (not shown) indicates that a listed part is not illustrated. A dash (—) is used when the part number applies to all parts in the illustration.

The number in the Part column is the Nordson Corporation part number. A series of dashes in this column (-----) means the part cannot be ordered separately.

The Description column gives the part name, as well as its dimensions and other characteristics when appropriate. Indentions show the relationships between assemblies, subassemblies, and parts.

Item	Part	Description	Quantity	Note
—	000 0000	Assembly	1	A
1	000 000	Subassembly	2	
2	000 000	• • Part	1	

- If you order the assembly, items 1 and 2 will be included.
- If you order item 1, item 2 will be included.
- If you order item 2, you will receive item 2 only.

The number in the Quantity column is the quantity required per unit, assembly, or subassembly. The code AR (As Required) is used if the part number is a bulk item ordered in quantities or if the quantity per assembly depends on the product version or model.

Letters in the Note column refer to notes at the end of each parts list. Notes contain important information about usage and ordering. Special attention should be given to notes.



Item	Part	Description	Quantity	Note
1	766 923	LIMIT SWITCH, WIRE SWEEPER	4	
2	766 911	MOTOR, GEAR, WIRE SWEEPER	1	
3	766 926	SPROCKET, 14T, 8MM PITCH, 12MM BORE	1	
4	767 147	ROPE, WIRE, 3MM DIA, ST/ST	AS	
5	766 925	SPROCKET, 57T, 8MM PITCH, 20MM BORE	1	
6	393 386	AIR MOVER, AM10	4	
7	767 146	WIRE ROPE GRIPS, ST/ST, 3MM	8	
8	769 112	CABLE, SY, 3 CORE + E, 1.5MM	AR	
9	769 107	CABLE, YY, 2-CORE + E, 0.75	AR	
10	769 132	GLAND, CABLE, 4-7MM	AR	
11	769 133	GLAND, CABLE, 8-13MM	AR	
12	766 924	CHAIN, 8MM PITCH, C/W SPLIT LINK	1	
13	768 240	FITTING, TEE, EQUAL, 1/8BSP X 6MM	2	
14	768 207	FITTING, ELBOW, 1/8BSP X 6MM	2	
15	768 251	TUBING, POLY, 6MM OD, BLUE, /MTR	AR	
16	766 957	BRUSH STRIP, WIRE SCRAPER, X3M LENGTH	1	A
17	766 956	BEARING, PILLOW BLOCK, WIRE SWEEPER	AR	
NOTE A: BRUSH IS SUPPLIED IN 3M LENGTHS AND CUT TO SIZE AR: As Required NS: Not Shown				

### 3. Magnetic Sweeper Assembly

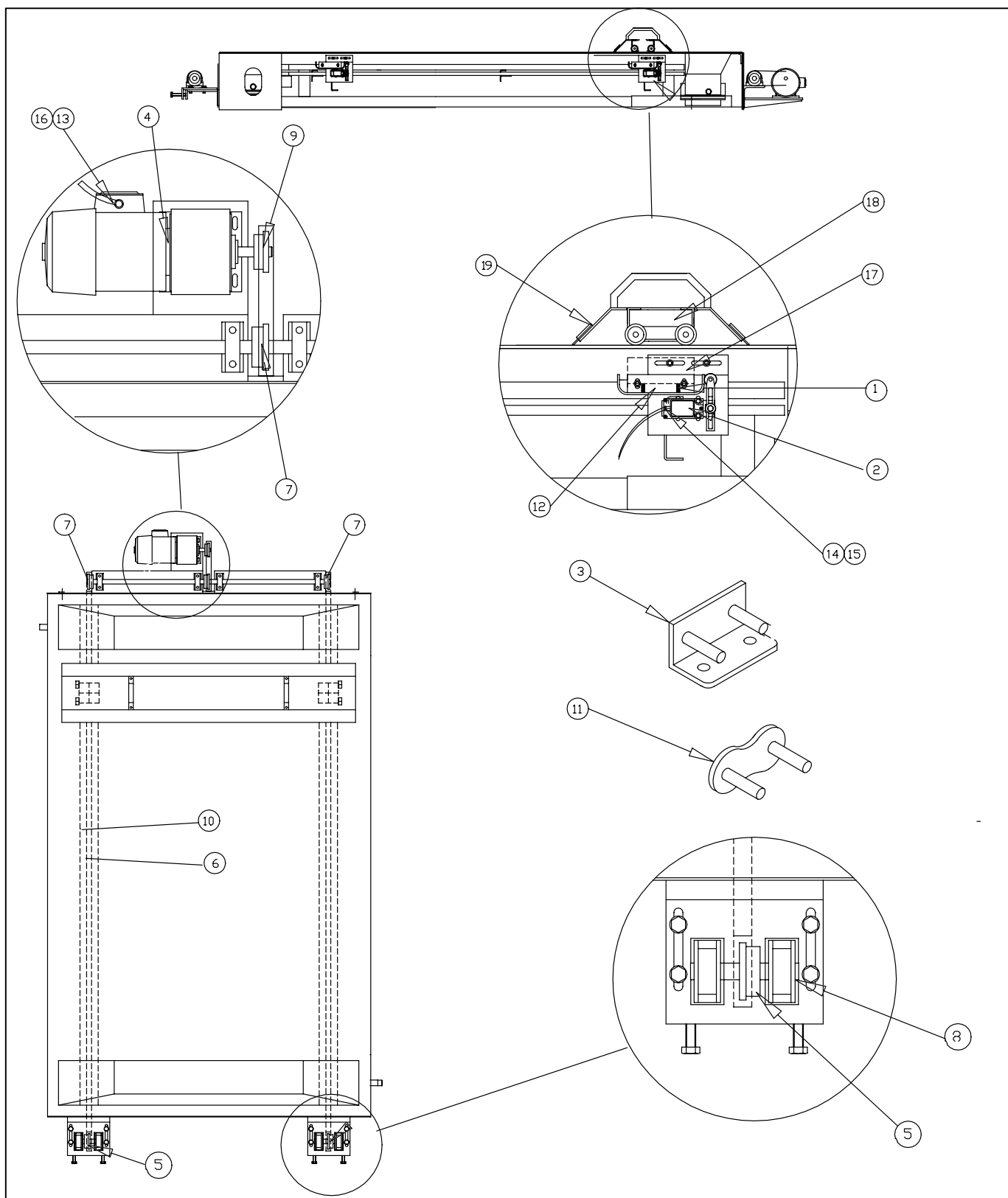


Fig. 7-2 Magnetic Sweeper Assembly

Item	Part	Description	Quantity	Note
1	766 936	COMPRESSION SPRINGS	8	
2	766 962	LIMIT SWITCH, MAGNETIC SWEEPER, >JAN00	4	
3	766 933	CHAIN ATTACHMENT, K2	2	
4	766 927	MOTOR, GEAR, MAGNETIC SWEEPER	1	
5	766 929	SPROCKET, 1/2", 17T, 20 BORE	2	
6	766 930	CHAIN, 1/2" SIMPLEX PER FOOT	AR	
7	766 934	SPROCKET, 1/2", 17T, 20 BORE, TAPER LOCK	3	
8	766 932	BEARING, PILLOW BLOCK, MAGNETIC SWEEPER	8	
9	766 928	SPROCKET, 1/2", 21T, 20 BORE, C/W CLUTCH	1	
10	766 941	CHAIN GUIDE	4	
11	765 038	CHAIN ATTACHMENT	2	
12	766 937	GUIDE BLOCK, MAGNETIC SWEEPER	4	
13	769 112	CABLE, SY, 3-CORE + E, 1.5MM	AR	
14	769 107	CABLE, YY, 2-CORE + E, 0.75	AR	
15	769 132	GLAND, CABLE, 4-7MM	AR	
16	769 133	GLAND, CABLE, 8-13MM	AR	
17	766 939	MAGNET BLOCK, LOWER, SWEEPER	2	
18	766 950	MAGNET BLOCK, UPPER, SWEEPER	2	
19	766 942	ALUMINIUM SWEEPER BLADE	1	A
<p>NOTE A: THE SWEEPER BLADE IS MANUFACTURED TO THE SPECIFIC BOOTH WIDTH AND INCLUDES UPPER MAGNETIC BLOCKS</p> <p>AR: As Required</p> <p>NS: Not Shown</p>				



# ***Specifications***

---





## Section 8

# Specifications

---

### **1. Sweeper Base Size**

---

Maximum Width	1900mm
Maximum Length	9000mm
Speed	Approx. 3m/min
Frequency	Appox. 1 stroke/4mins

